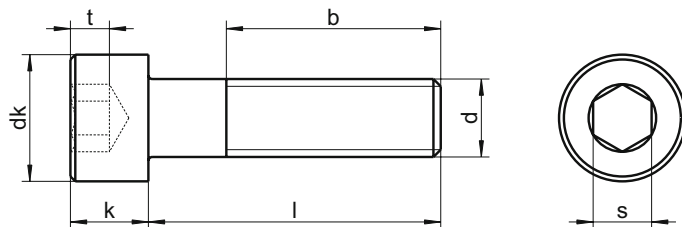


# DIN 912 - Page 1 - sim. ISO 4762

## Hexagon socket head cap screws



dk max.	3,0	3,8	4,5	5,5	7,0	8,5	10,0	13,0	16,0	18,0	21,0	24,0	27,0
k max.	1,6	2,0	2,5	3,0	4,0	5,0	6,0	8,0	10,0	12,0	14,0	16,0	18,0
s	1,5	1,5	2	2,5	3	4	5	6	8	10	12	14	14
b	15	16	17	18	20	22	24	28	32	36	40	44	48
t	0,7	1,0	1,1	1,3	2,0	2,5	3,0	4,0	5,0	6,0	7,0	8,0	9,0
●	1,5	1,5	2	2,5	3	4	5	6	8	10	12	14	14
Length / Ø	M1,6	M2	M2,5	M3	M4	M5	M6	M8	M10	M12	M14	M16	M18
3	▲●	▲●											
4	▲●	▲●	▲●	▲●									
5	▲●	▲●	▲●	▲●	▲●								
6	▲●	▲●	▲●	▲●	▲●	▲●	▲●						
8	▲●	▲●	▲●	▲●	▲●	▲●	▲●						
10	▲●	▲●	▲●	▲●	▲●	▲●	▲●	▲●					
12	▲●	▲●	▲●	▲●	▲●	▲●	▲●	▲●	▲●				
14	▲●	▲●	▲●	▲●	▲●	▲●	▲●	▲●	▲●				
16	▲●	▲●	▲●	▲●	▲●	▲●	▲●	▲●	▲●	▲●			
18		▲●	▲●	▲●	▲●	▲●	▲●	▲●	▲●	▲●			
20		▲●	▲●	▲●	▲●	▲●	▲●	▲●	▲●	▲●	▲●	▲●	▲●
22			▲●	▲●	▲●	▲●	▲●	▲●	▲●	▲●	▲●	▲●	▲●
25			▲●	▲●	▲●	▲●	▲●	▲●	▲●	▲●	▲●	▲●	▲●
30				▲●	▲●	▲●	▲●	▲●	▲●	▲●	▲●	▲●	▲●
35				▲●	▲●	▲●	▲●	▲●	▲●	▲●	▲●	▲●	▲●
40				▲●	▲●	▲●	▲●	▲●	▲●	▲●	▲●	▲●	▲●
45				▲●	▲●	▲●	▲●	▲●	▲●	▲●	▲●	▲●	▲●
50				▲●	▲●	▲●	▲●	▲●	▲●	▲●	▲●	▲●	▲●
55					▲●	▲●	▲●	▲●	▲●	▲●	▲●	▲●	▲●
60					▲●	▲●	▲●	▲●	▲●	▲●	▲●	▲●	▲●
65					▲●	▲●	▲●	▲●	▲●	▲●	▲●	▲●	▲●
70					▲●	▲●	▲●	▲●	▲●	▲●	▲●	▲●	▲●
75					▲●	▲●	▲●	▲●	▲●	▲●	▲●	▲●	▲●
<b>SU</b>	1000	1000	1000	1000 ≥ 45 500	1000 ≥ 35 500	500 ≥ 45 200	500 ≥ 45 200	200 ≥ 45 100	100	100 ≥ 55 50	25	25	25

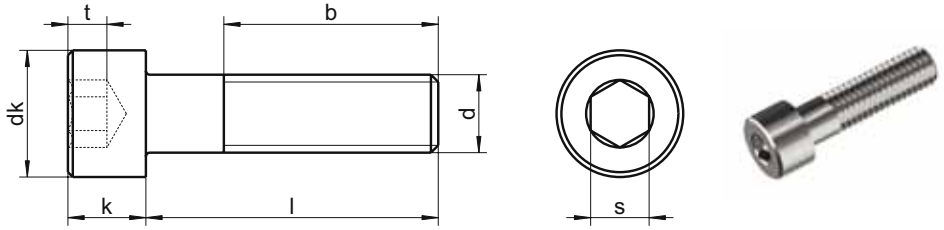
■ A1 / ▲ A2 / ● A4 | SU: Sales unit | All measurements in mm | Other dimensions on request.

Example item no. 912-2-8X40 DIN 912 - A2 - M8 - l = 40mm

Hexagon socket head cap screws DIN 912 with full thread or according to AD2000-W2 can be found on the following pages. Hexagon socket head cap screws with TX can be found as ISO 14579 in this catalogue. Hexagon socket head cap screws with UNC / UNF thread according to ANSI B18.3 are available on request.

# sim. ISO 4762 - **DIN 912** - Page 2

## Hexagon socket head cap screws



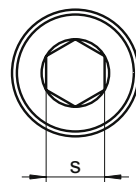
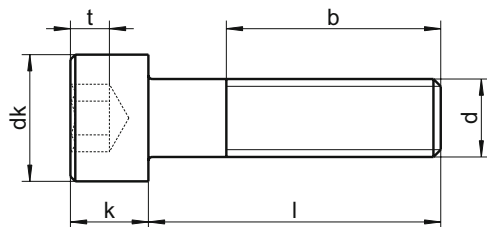
dk max.	8,5	10,0	13,0	16,0	18,0	21,0	24,0	27,0
k max.	5,0	6,0	8,0	10,0	12,0	14,0	16,0	18,0
s	4	5	6	8	10	12	14	14
b	22	24	28	32	36	40	44	48
t	2,5	3,0	4,0	5,0	6,0	7,0	8,0	9,0
●	4	5	6	8	10	12	14	14
Length / Ø	M5	M6	M8	M10	M12	M14	M16	M18
80	▲●	▲●	▲●	▲●	▲●	▲●	▲●	▲●
85	▲●	▲●	▲●	▲●	▲●	▲●	▲●	▲●
90	▲●	▲●	▲●	▲●	▲●	▲●	▲●	▲●
95	▲●	▲●	▲●	▲●	▲●	▲●	▲●	▲●
100	▲●	▲●	▲●	▲●	▲●	▲●	▲●	▲●
110		▲●	▲●	▲●	▲●	▲●	▲●	▲●
120		▲●	▲●	▲●	▲●	▲●	▲●	▲●
130		▲●	▲●	▲●	▲●	▲●	▲●	▲●
140		▲●	▲●	▲●	▲●	▲●	▲●	▲●
150		▲●	▲●	▲●	▲●	▲●	▲●	▲●
160		▲●	▲●	▲●	▲●	▲●	▲●	▲●
170		▲●	▲●	▲●	▲●	▲●	▲●	▲●
180		▲●	▲●	▲●	▲●	▲●	▲●	▲●
190		▲●	▲●	▲●	▲●	▲●	▲●	▲●
200		▲●	▲●	▲●	▲●	▲●	▲●	▲●
210			▲●	▲●	▲●			
220			▲●	▲●	▲●			
230			▲●	▲●	▲●			
240			▲●	▲●	▲●			
250			▲●	▲●	▲●			
260			▲●	▲●	▲●			
270			▲●	▲●	▲●			
280			▲●	▲●	▲●			
300			▲●	▲●	▲●			
SU	200	100	100 ≥ 95 50	50	50 ≥ 100 25	25	25	25

■ A1 / ▲ A2 / ● A4 | SU: Sales unit | All measurements in mm | Other dimensions on request.

Example item no. 912-2-8X40 DIN 912 - A2 - M8 - l = 40mm

# DIN 912 - Page 3 - sim. ISO 4762

## Hexagon socket head cap screws



dk max.	30,0	36,0	40,0	45,0
k max.	20,0	24,0	27,0	30,0
s	17	19	19	22
b	52	60	66	72
t	10,0	12,0	13,5	15,5
●	17	19	19	22
<b>Length / Ø</b>	<b>M20</b>	<b>M24</b>	<b>M27</b>	<b>M30</b>
30	▲ ●			
35	▲ ●			
40	▲ ●	▲ ●		
45	▲ ●	▲ ●		
50	▲ ●	▲ ●	▲ ●	▲ ●
55	▲ ●	▲ ●	▲ ●	▲ ●
60	▲ ●	▲ ●	▲ ●	▲ ●
65	▲ ●	▲ ●	▲ ●	▲ ●
70	▲ ●	▲ ●	▲ ●	▲ ●
75	▲ ●	▲ ●	▲ ●	▲ ●
80	▲ ●	▲ ●	▲ ●	▲ ●
85	▲ ●	▲ ●	▲ ●	▲ ●
90	▲ ●	▲ ●	▲ ●	▲ ●
95	▲ ●	▲ ●	▲ ●	▲ ●
100	▲ ●	▲ ●	▲ ●	▲ ●
110	▲ ●	▲ ●	▲ ●	▲ ●
120	▲ ●	▲ ●	▲ ●	▲ ●
130	▲ ●	▲ ●	▲ ●	▲ ●
140	▲ ●	▲ ●	▲ ●	▲ ●
150	▲ ●	▲ ●	▲ ●	▲ ●
160	▲ ●	▲ ●	▲ ●	▲ ●
170	▲ ●	▲ ●	▲ ●	▲ ●
180	▲ ●	▲ ●	▲ ●	▲ ●
190	▲ ●	▲ ●	▲ ●	▲ ●
200	▲ ●	▲ ●	▲ ●	▲ ●
<b>SU</b>	25 ≥ 100 10	10 ≥ 140 5	5	5

■ A1 / ▲ A2 / ● A4 | SU: Sales unit | All measurements in mm | Other dimensions on request.

Example item no. 912-2-8X40 DIN 912 - A2 - M8 - l = 40mm